



SecureKey™ Technology Re-key with a Key

Schlage's new SecureKey™ cylinder allows you to re-key the lock without removing it from the door. SecureKey Technology is secure, easy and convenient.

High-Security Cylinder

- 10 times more secure*
(*SecureKey Technology enables 10 times greater number of possible key-cut combinations reducing the chance of someone else's key opening your door.)
- Bump and pick resistant
- ANSI Grade 1 Cylinder
- SecureKey Technology provides superior key control by using a unique blue Reset Key to re-key the lock

Convenient

- SecureKey cylinders can be keyed to standard Schlage C keyway (5 key biting configuration)
- Easily identifiable by a plus sign (+) on the face of the cylinder
- Two homeowner keys and one Reset Key included
- Keyed product comes with your choice of a SecureKey cylinder or pin and tumbler cylinder (specify when placing order)

Easier and Faster to Re-key

- Simple, reliable two-step re-keying process
- No re-pinning of cylinders
- Lock does not have to be taken off the door to re-key



- Re-key lock without removing from the door
- No more re-key pinning costs
- Uncompromised safety and security





Look for the + Sign

SecureKey cylinders are identifiable by a + sign



Re-keying Locks with SecureKey™ Technology

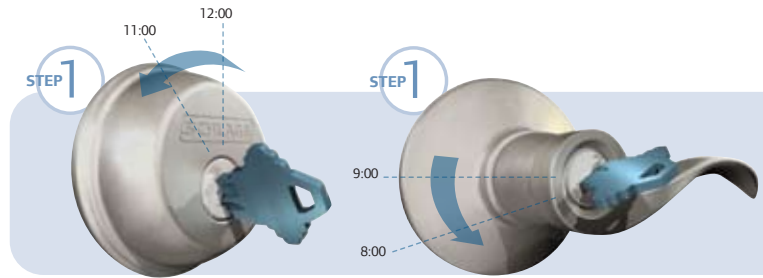
STEP 1 - Put the Lock in Re-keying Mode

Fully insert the **current blue Reset Key**.

Deadbolt or knob: turn the key from the 12:00 position to the 11:00 position.

Lever: turn the key from the 9:00 position to the 8:00 position.

Remove the key.



STEP 2 - Re-key the Lock

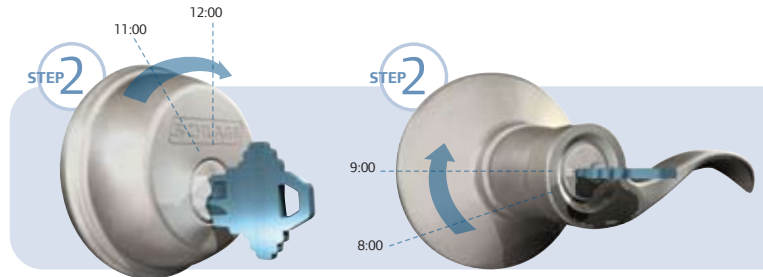
Fully insert the **new blue Reset Key** (cut to match the new homeowner key)

Deadbolt or knob: turn back to the 12:00 position.

Lever: turn back to the 9:00 position.

Remove the key.

The lock is now re-keyed, begin using the everyday brass keys.

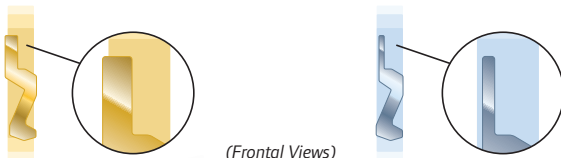


Re-key with a Key for Added Security

The blue Reset Key has a unique design to differentiate it from the brass User Key. This unique design ensures that only a blue Reset Key, and not another type of key or tool, can be used to re-key the cylinder.

Brass User Key

Blue Reset Key



(Frontal Views)



Superior Key Control

Blue Reset Key has extra material not found on a User Key to engage the cylinder for re-keying.

Locking sidebar provides high-security bump resistance.



Reset Key has a unique key cut, ensuring that only a specific reset key will re-key the lock.

10x 10 times more secure*

10 Times More Key Combinations



*SecureKey Technology enables 10 times greater number of possible key-cut combinations, reducing the chance of someone else's key opening your door

Available in all F and B Series products

How to Order SecureKey™ Keyed Product

Function	Levers	Finish
F51SK	ACC	SCP

Function **Select the desired function** e.g. SecureKey EntranceF51SK
 Lever **Select the required lever design** e.g. ACC - Accent F51SKACC
 Finish **Select the desired finish** e.g. Satin Chrome PlateF51SKACCSCP

NOTE Specify **SK** in your order to ensure SecureKey is supplied.

ANSI Grade 1 Cylinder

- Increased reliability and longer cylinder life.



www.securekey.schlage.com

