

These mounting instructions are intended for use with all Locknetics keypad models.

Model Description:

- KP73+ 6-3/4" x 1-3/8", available in special finishes
- KP74+ 6-3/4" x 1-3/8", Stainless finish
- KP76+ 7" x 1-3/8", Black Lexan
- KP77+ 4-1/2" x 2-3/4", Black Lexan
(single gang electrical box mount)



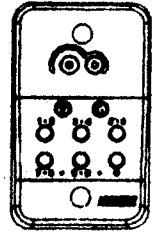
KP73+



KP74+



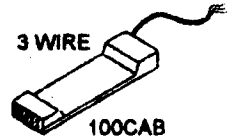
KP76+



KP77+

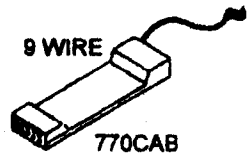
Accessories:

- 100CAB Connection cable, three wire, from one or two keypads to CT150SE controller.
- 770CAB Connection cable, nine wire, from one or two keypads to CT150KP controller.
- AUXCAB1 Auxiliary extension cable, one foot. Used for connecting keypad to adaptor cables, 770CAB or 100CAB.
- AUXCAB16 Auxiliary extension cable, sixteen feet. Used for connecting keypad to adaptor cables, 770CAB or 100CAB.



3 WIRE

100CAB



9 WIRE

770CAB

Keypad Mounting:

Step #1: Prep wall or frame as shown in **Figure 1**.

- a) Drill two (2) mounting holes 6-1/8" from center to center to secure keypad as shown.
- b) Drill one (1) wire access hole 1-1/8" DIA. for connection cable at 13/16" above center of lower mounting hole.

Note: If mounting two keypads back to back, be sure hole locations are in alignment.

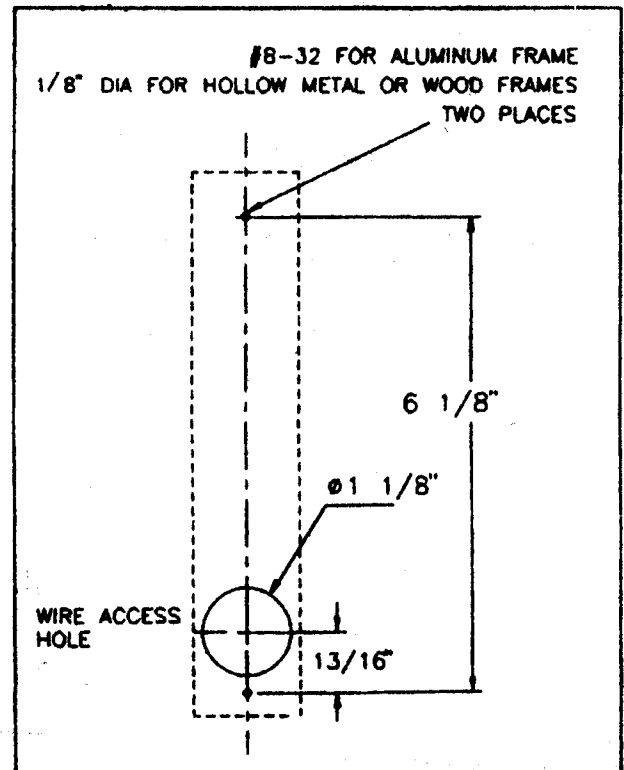


Figure 1 Mounting hole location.

Step #2: Connect keypad(s) to connection cable.

For single keypad: **Figure 2.**

- Pass module of connection cable through access hole.
- Connect the keypads connector to module side of the connection cable.

For two (2) keypads mounted back to back: **Figure 3.**

- Pull connection cable through hole and connect first keypad to side "A" of the connection cable. Connecting the first keypad to side "A" of the connection cable allows access to cable for the second keypad.
- Feed cable back through wire access hole and connect the second keypad to side "B" of the connection cable.

Notes: 1. If using the AUXCAB1 for connecting two (2) keypads on deep or non-standard frames, connect AUXCAB1 to the first keypad before connecting the connection cable.

For two (2) keypads, one local one remote: **Figure 4.**

- Pull connection cable through hole and connect first keypad to one side of connection cable.
- Connect one end of the AUXCAB16 to the remote keypad, connect the other end of the AUXCAB16 to the other side of the connection cable.

Step #3: Mount Keypad(s).

For wall or frame mounting: **Figure 5.**

- Secure the keypad to wall or frame using (2) #8-32 flat head screws.
- Conceal screws with (2) anti-tamper plugs supplied.

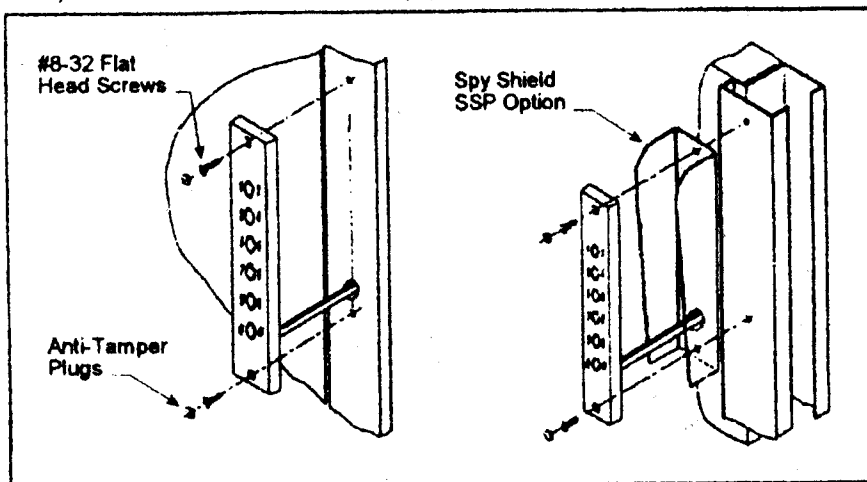


Figure 5 Mount keypad to wall or frame.

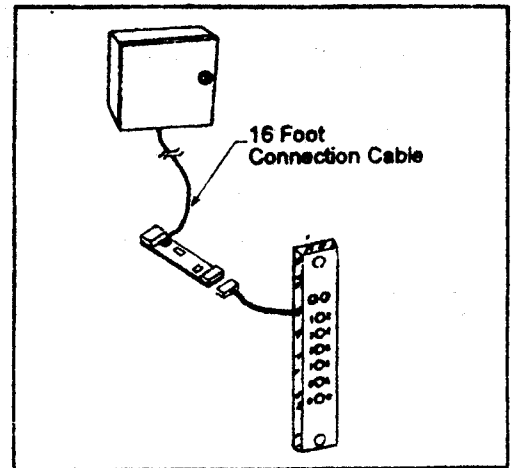


Figure 2 Connecting single keypad.

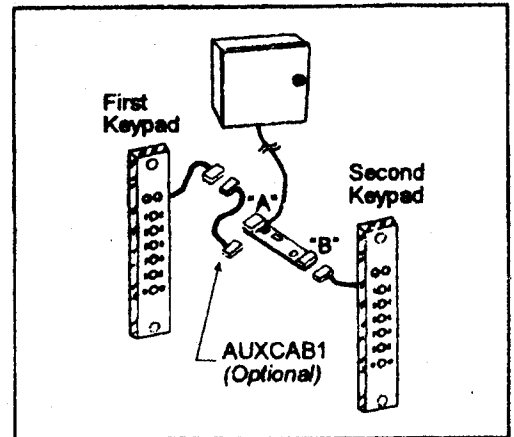


Figure 3 Connecting two local keypads.

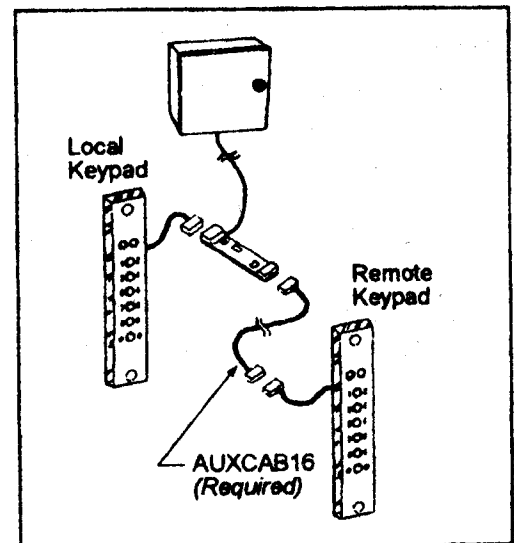


Figure 4 Connecting local and remote keypads.